



NetLegalIndex Installation Guide

System Requirements

Please ensure that your computer meets the following system requirements before installing the NetLegalIndex Client and/or NetLegalIndex Manager:

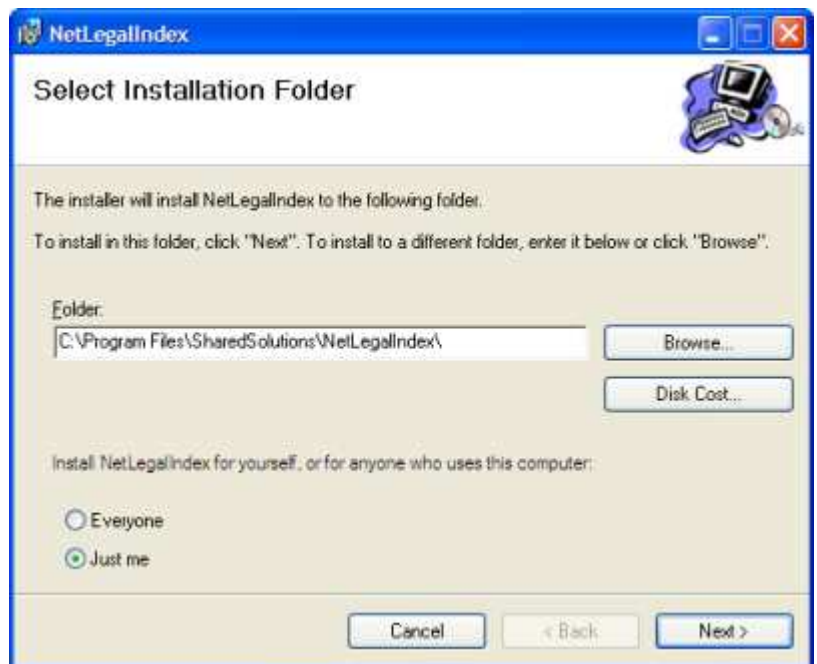
- Net Framework version 3.5 or greater installed (This can be found on <http://www.netlegal.ca/downloads/downloads.html>)
- 2005 or 2008 C++ runtime package installed (This can be found on <http://www.netlegal.ca/downloads/downloads.html>)
- Windows XP SP3 or greater

If they do not exist on your computer, you will be prompted during the installation to install any missing components.

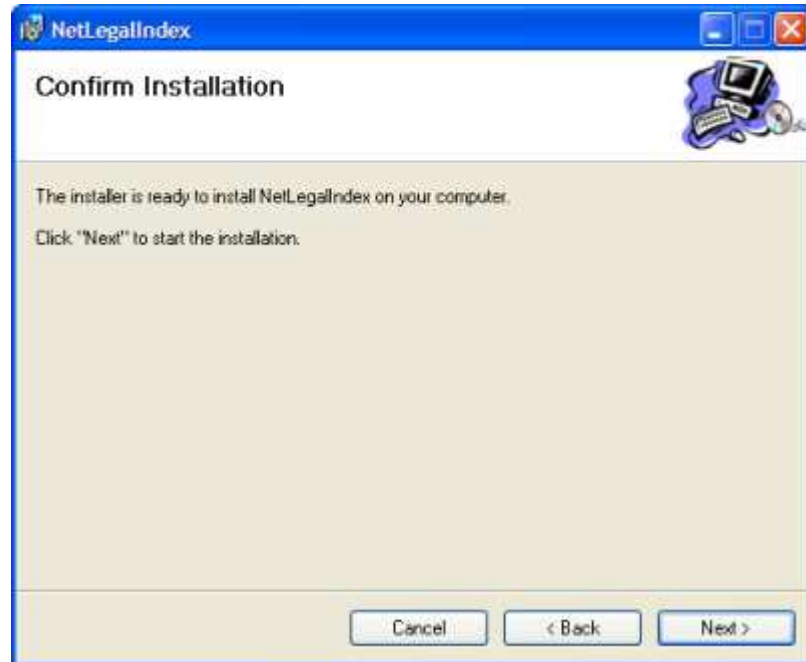
Installation

When the installation box is up on your computer screen:

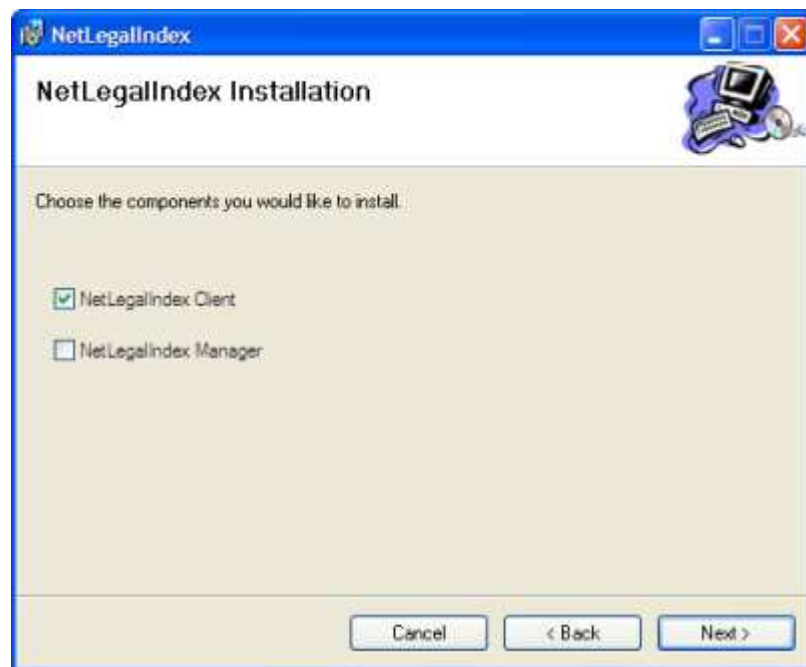
1. Click **Next** on the Select Installation Folder screen once you have selected a folder and the users who can access NetLegalIndex on your computer.



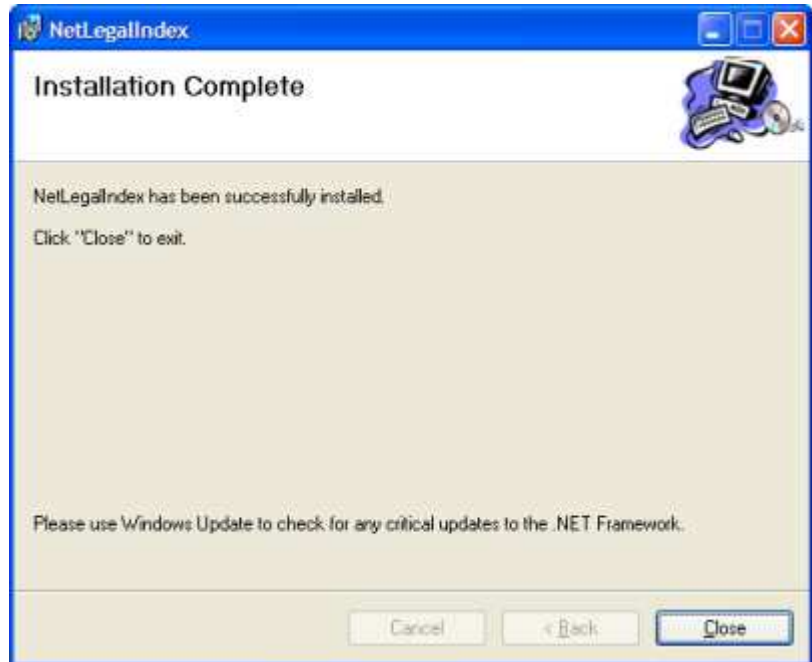
2. Click **Next** on the Confirm Installation screen to continue the installation process.



3. Choose the components you would like to install on your computer by placing a check in the appropriate box(es). Click **Next** to proceed.



4. Installation is complete. You can begin using NetLegalIndex right away by clicking the NetLegalIndex icon on your desktop or on your system tray.



If you have any questions, please email NetLegal Support at support@netlegal.ca or call us toll-free at 1-888-808-3302.